

# EZCast Pro Box

## B02



### User's Manual



Rev. 1.02

# History:

Revision	Change Note	Date
V1.00	Initial version	2016/4/14
V1.01	Miscellaneous Modification	2016/4/26
V1.02	Function changes	2016/11/20

# Introduction

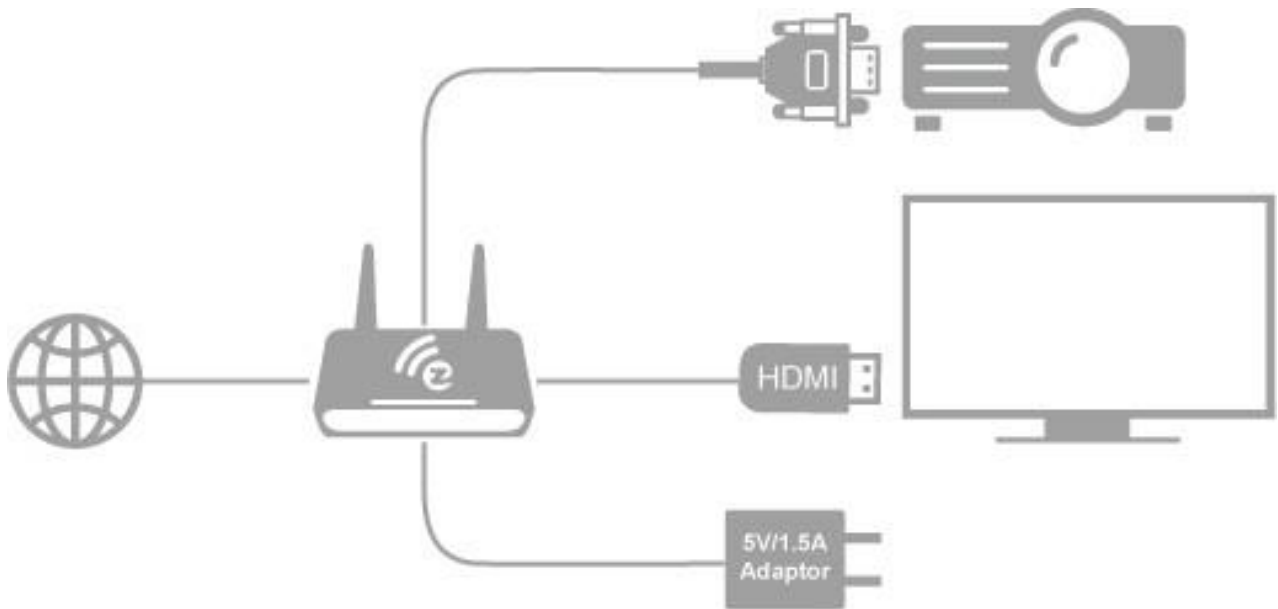
Thanks for choosing EZCast Pro Box B02, it is based on popular EZCast Pro app and adding new dual WiFi to support 2.4Ghz and 5Ghz at the same time. It's the most advanced WiFi Display device ever, which supports most Wireless display standards like Miracast, DLNA and AirPlay, Multimedia decoding, PDF/Office Viewer, Web browser, Real object projection (Live camera), as well as our advanced split screen control. It also embedded 10M/100M Ethernet, which will provide stable connection and easier setup steps. The USB port supports HID device and USB disk, and the extended control port helps you to control projectors or other devices at one time. With the regularly firmware update, it will keep compatible with latest OS platforms and keep improving features. This will be the best device for classroom, and conference rooms!!

## What's in Box

- EZCast Pro Box x1
- Antenna x2
- 5V-1.5A DC adapter with cable x1
- VGA cable x1
- HDMI cable x1
- Audio out cable x1
- UART cable x1
- QSG x1

## Hardware Installation

There will be an HDMI cable and USB adapter inside of the box, use the 5V-1.5A DC adapter to power up EZCast Pro Box, and plug HDMI or VGA cable to your TV or Projector. We also suggest connect RJ-45 port with your router to simplify setup procedures and get stable connection.



## LED Indication



- There will be 4 different LEDs color for different status in front of EZCast Pro Box, you can refer to it to know the working status:
  - 2.4Ghz: Stays on while 802.11n 2.4Ghz WiFi is working
  - 5Ghz: Stays on while 802.11ac 5Ghz WiFi is working
  - LAN: Turns on when LAN port is connected
  - DC: Power on/off indication

# App Installation

- IOS and Android users:
  - Please search “EZCast Pro” in Apple’s App Store or Google Play and install it.
  - Or Use the QR scanner app to scan the QR code on EZCast Pro Box’s main page.

\*Supports iOS9 and Android 4.2 above

- Windows and Mac OS users:
  - Please download it from our official website: <https://ezcast-pro.com/download/>

\*Supports from Windows 7/8.1/10, and Mac OS 10.10 and after.

\*Note: OS support may change along with future OS update without notification in advance.

## Get Started

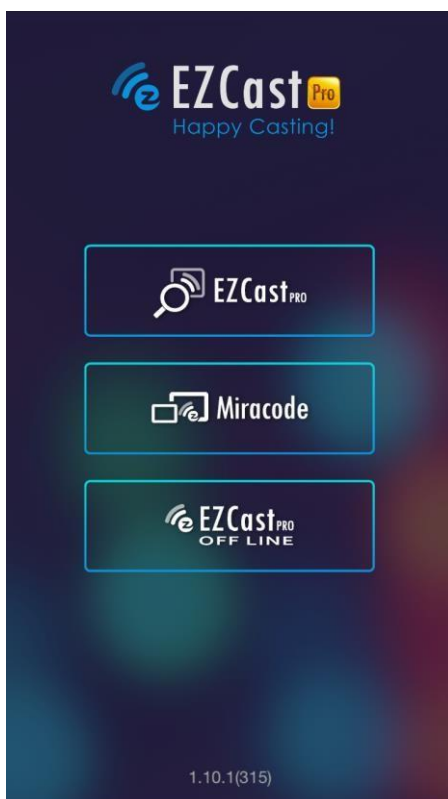


- Enter your NB/PC/Smartphone/Tablet’s WiFi setting, find the SSID (ProBox\_xxxxxxx) or (ProBox5G\_xxxxxxx) and connect with it.
  - The Dev means device’s host name, you can change it in the setting later.
  - You may connect Pro Box’s 2.4Ghz or 5Ghz WiFi with different

devices but they are under different subnet.

- Open EZCast Pro app on your device. Once you've connected to EZCast Pro Box, the on-screen link status will be updated and show how many devices are linking to it directly.
- If there is any new FW available, the updated icon will be shown on device.
- The Miracode is a direct IP link shortcut, you can turn it off in administrator mode later.
- The main screen may change based on different connecting methods (direct or via router)
- There may be another 4 digits CastCode, which is a display gate keeper to let users who can see this code to cast content.

**App starts** (below photos are based on ios version)



→ Discover device

→ Input IP or Miracode to link manually

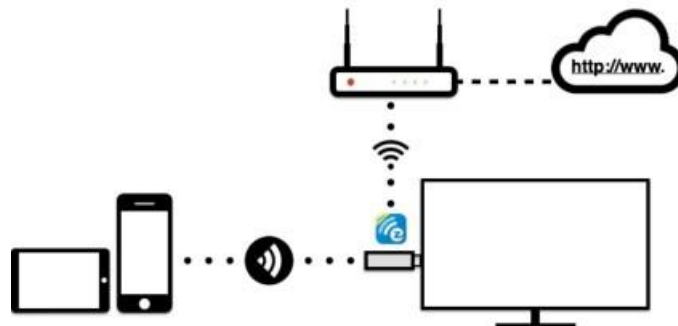
→ Work under offline mode

- Click “EZCastPro” icon, the device will be listed, you can select the device you like to cast if there are more than one.
- If you are not linking to EZCast Pro, you can only use several functions in offline mode.

\*Note: EZCast Pro app only works with EZCast Pro hardware now, it's not compatible with normal EZCast products.

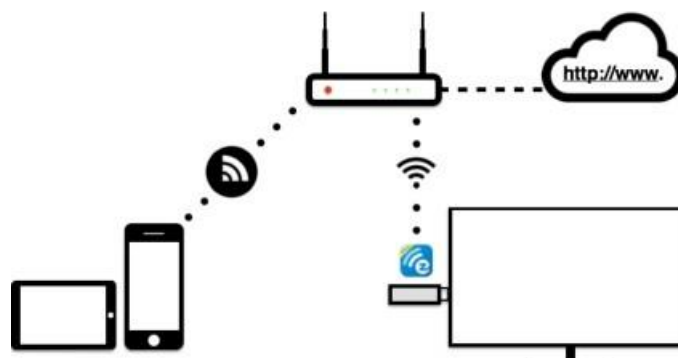
## Important: WiFi Link mode explanations

- EZCast Pro devices allow various connection methods, here are the descriptions:
- SoftAP mode: It's direct linking from PC/MobilePhone/Tablet to a Pro device, you can link to EZCast Pro's SSID directly to discover it, and you can also setup Pro devices' WiFi to link with your router to keep internet surfing.



\*Note: After setting up your internet, sometimes the connection between EZCast Pro and your mobile phone might be disconnected because of different WiFi router channel. Please remember to reconnect again.

- There is another link mode “Infrastructure mode”, which allows you to link with EZCast Pro Box through router instead of SoftAP mode. However, the performance may not as good as direct link, and you will need to enter the setting to enable it if need it.



- There is 2 special modes for WiFi connections in our advanced setting, one is “Direct link only” and the other is “Via Router only”.
- In “Direct Link Only” mode, you will not be able to discover EZCast

Pro through your home router. Under “Via Router Only” mode, the Pro device will shut down Soft AP (SSID), in this mode the SSID will be turned off so that no one can search it directly to prevent some hacker’s attack. Please be careful you will need to connect device through router under this mode.



Direct Link: This provides best bandwidth between your Smart devices/PC and EZCast Pro



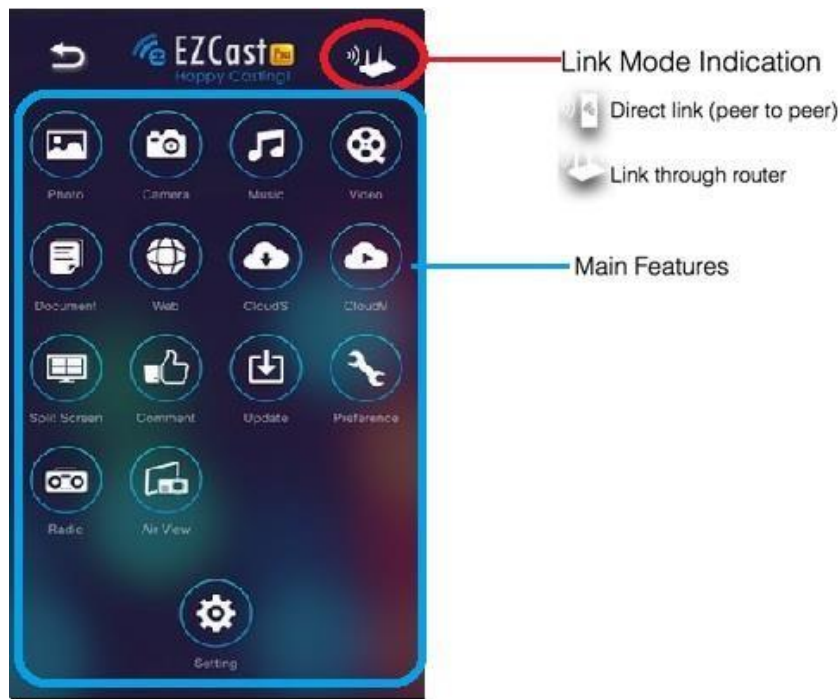
Via Router Allowed: You will be able to discover EZCast Pro through home router if you have established the connection with router.



Via Router Only: In this mode, the SoftAP of 2.4Ghz/5Ghz WiFi will be turned off, you can use it under some particular purpose so no one can link to EZCast Pro directly.

## App Tips





- You can cast your multimedia data wirelessly now, however, please be noted some features like cloud video or web will require internet connection.
- Please be noted EZMirror(Miracast) mode will disconnect current WiFi and you will need to connect to internet by your phone (3G or WiFi) if you want to keep internet surfing.

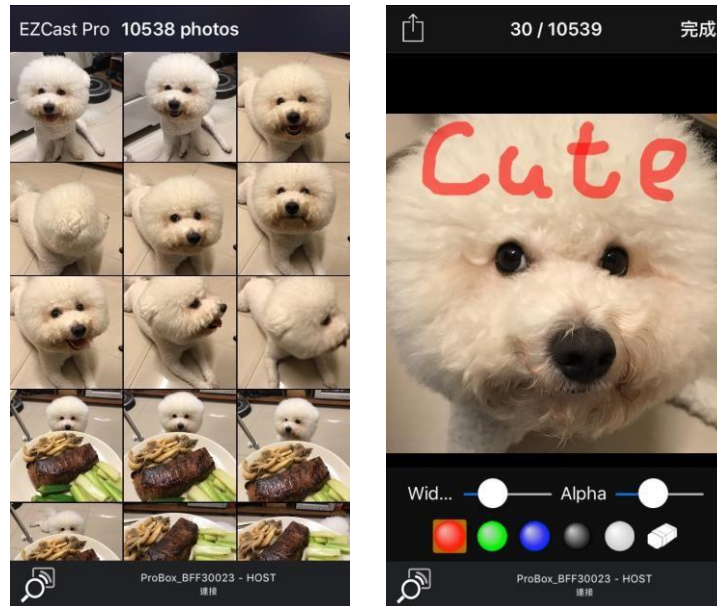
## App Features(\*based on iOS app for your reference)

- Photo
  - You will have to allow EZCast Pro to share your camera roll and enable the location service before using Photo function.



- In Photo viewer, you can select photo and it will be displayed on your TV/Projector. You can also use gesture control to zoom in/out or change

photos.



- We developed a practical Sketch tool ,you can draw on the photo you picked, and save it if you like.

## ● Video

- There are 2 sources to video streaming. One is to sync the video you like through iTunes (iTunes File Syncing), or you can select video from your recorded video (Camera Roll)



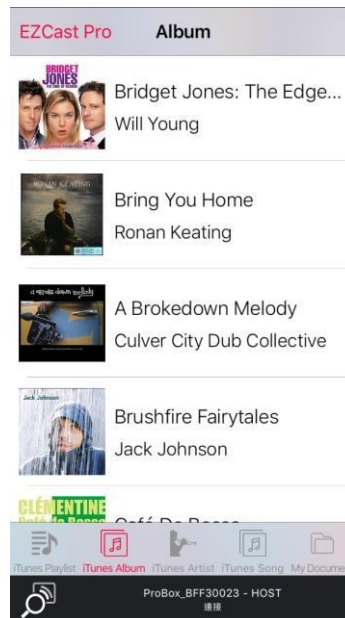
- Please be noted iOS will compress the recorded video before streaming to save the bandwidth, you can decide if you want to save it in EZCast Pro app for future use.
- You can also sync subtitle file to EZCast Pro, just make sure the filename is the same with your video and sync through iTunes, it will be automatically shown with video playing.

\* For subtitle, we support srt, smi, ssa and cdg formats with UTF-8 coding.

- For subtitle support, please see demo video: <http://goo.gl/0yq5Z8>

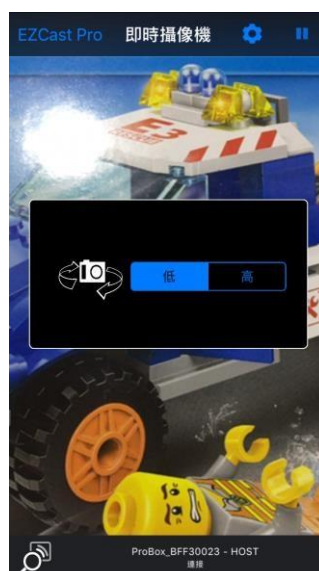
## ● Music

- The music player allows you to stream music through WiFi, and we can support playlist.



## ● Live Camera

- Live camera is a real object camera which allows you to stream the image from mobile device's camera, and take a snap shot to edit.



- You can adjust image quality, switch from Front/Rear camera. You can enable Sketch and save the current image to album.

- Document

- The document viewer can support MS-office, PDF, and Apple's iWorks. Before you start to cast, please remember to sync the document files to your iOS device through iTunes.

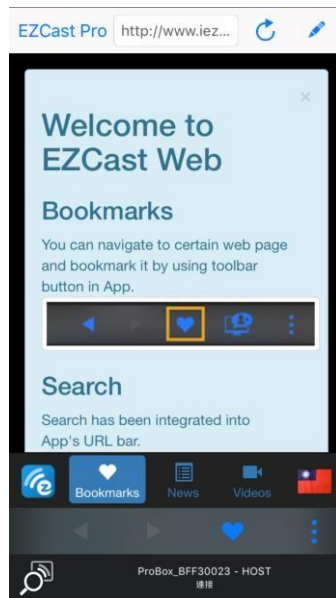


- The document viewer supports sketch as well, that means you can make some note on the document, and save the page to camera roll.

\* Please be noted some documents may not be displayed the same as shown on PC.

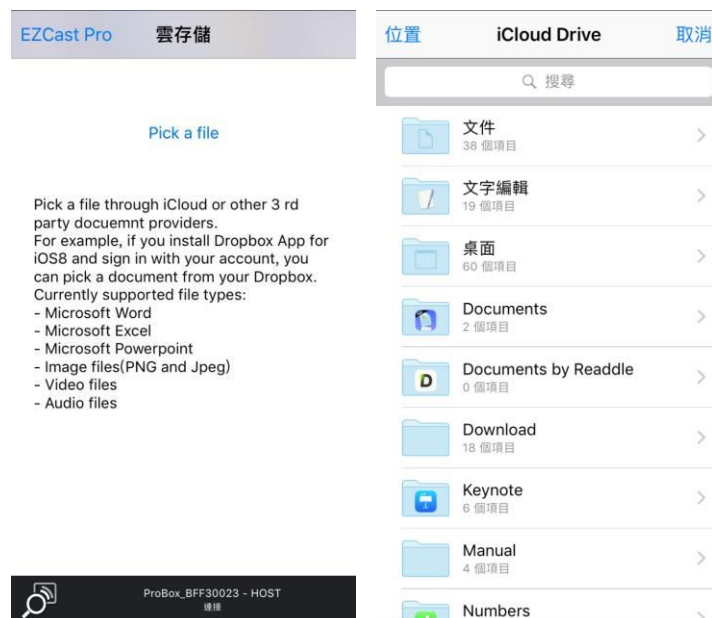
- Web

- EZCast Pro comes with a built-in browser, and we also categorize several popular websites for you.
- The web page will dynamically change with different country setting in your device.
- Sketch function is also supported.



## ● Cloud Storage

- We will link to your personal Dropbox and \*Google Drive account to let you access your cloud storage anywhere. All content will be shown for you to download and display.

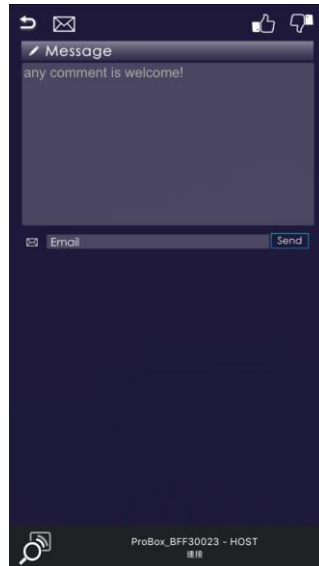


- You can enable sketch function if you download and decode a document file

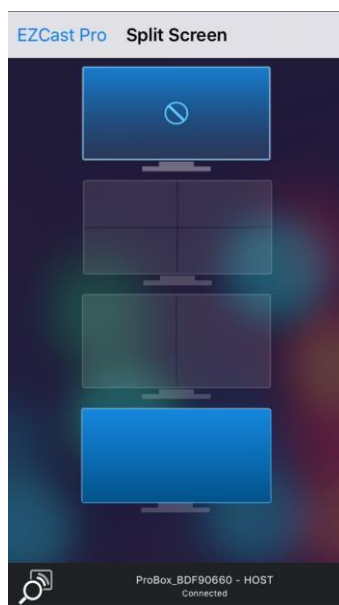
## ● Comment

- We treasure your feedback either good or bad, so we created an innovative way to communicate with you. You can send some comments, suggestions or even bugs to us directly, and all the inputs will make our

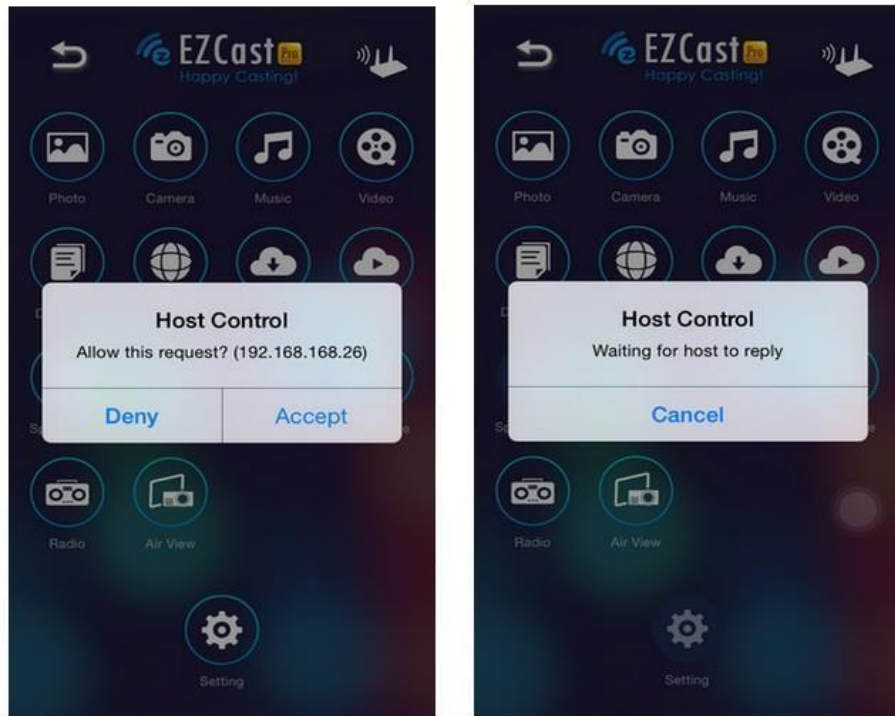
product better.



- Split Screen and Host Control



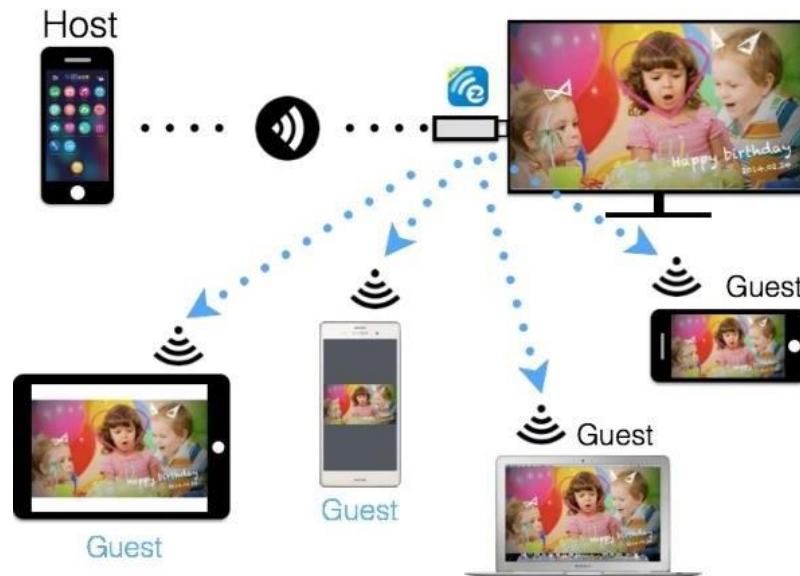




- When you are the first user link to EZCast Pro and open the app, you will become the “Host”.
  - Host has the authority to control the display, that means Host role can use all features without limitation. The next or later coming users will be treated as “Guest”, some functions will be disabled under Guest mode, and you will need to get Host’s permission to display.
  - EZCast Pro device will allow max. 4 users to display on screen together, but only Host can decide the position he wants, other guest’s screens will be placed automatically after the request is allowed.
- Preference
    - Except Preferred device setting, you can also enable/disable the inquiry from guests, or automatically allow all display requests from guests without showing pop-up message.



## ● AirView

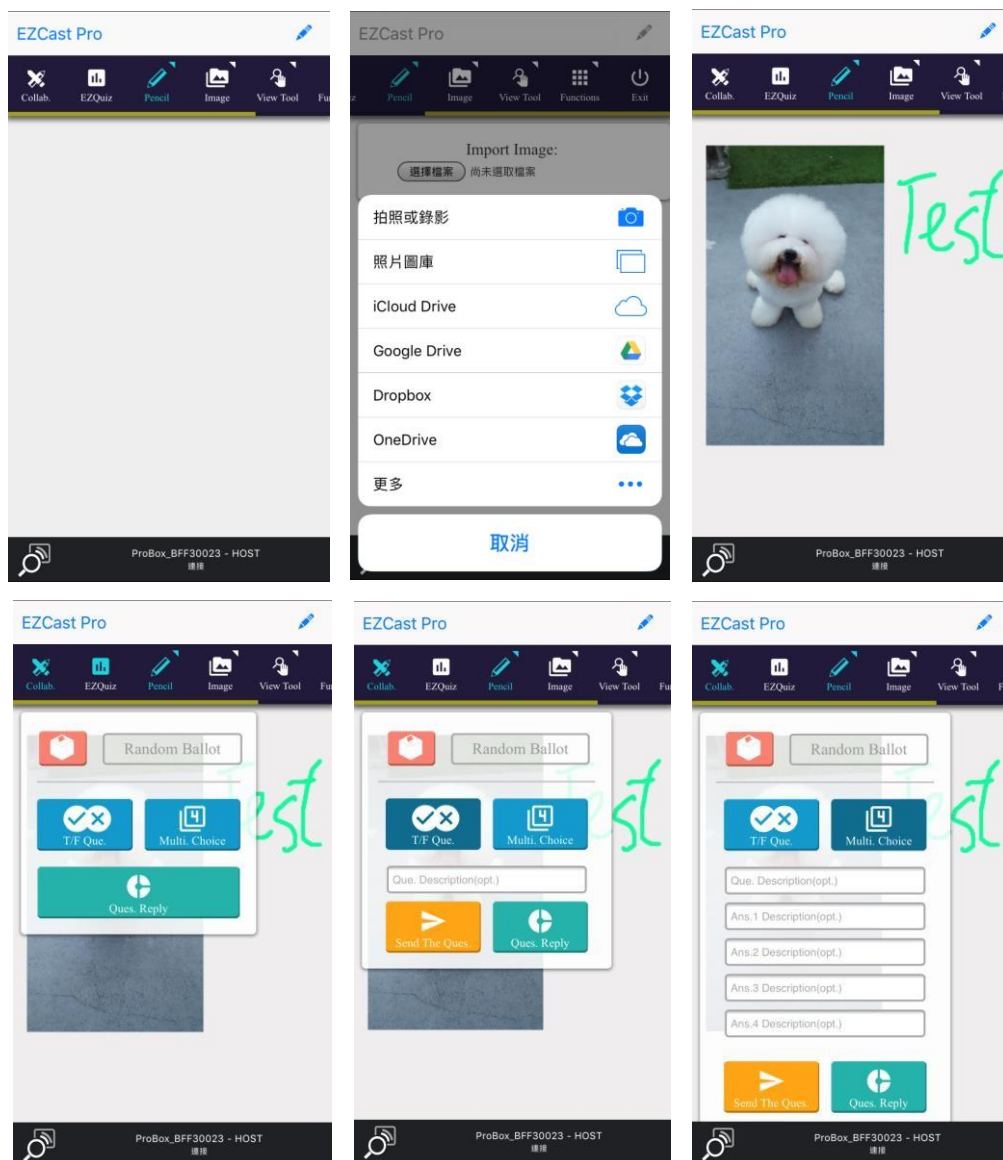


- You can enable AirView function to see the current display content on EZCast Pro hardware, this is a great tool for display sharing.
- This function will not need Host's permission to enable.
- \* This feature doesn't support video or audio streaming.

## ● EZBoard

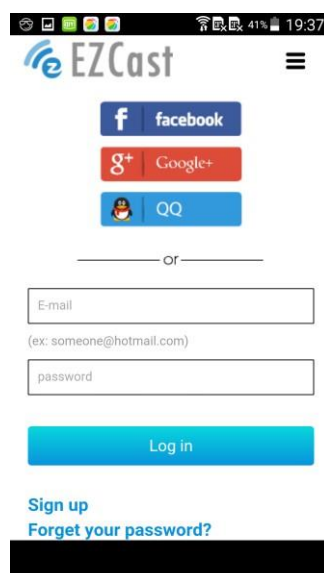
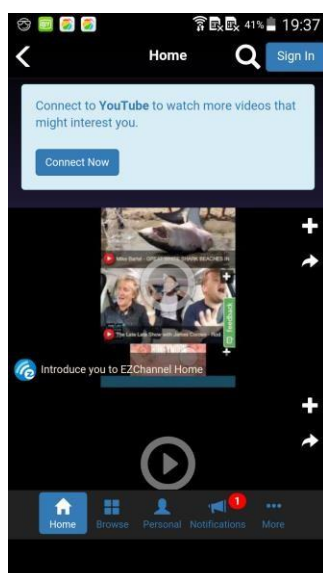
- EZBoard is an innovative function to achieve real collaboration, which will allow all users share/collaborate in the same board. It can support sketch, insert photos or texts, all users can see the real-time result either on Pro or their own devices. Furthermore, we also integrate a quick tool for quiz purpose.





\* Please be noted EZBoard will require internet connection.

## ● EZChannel

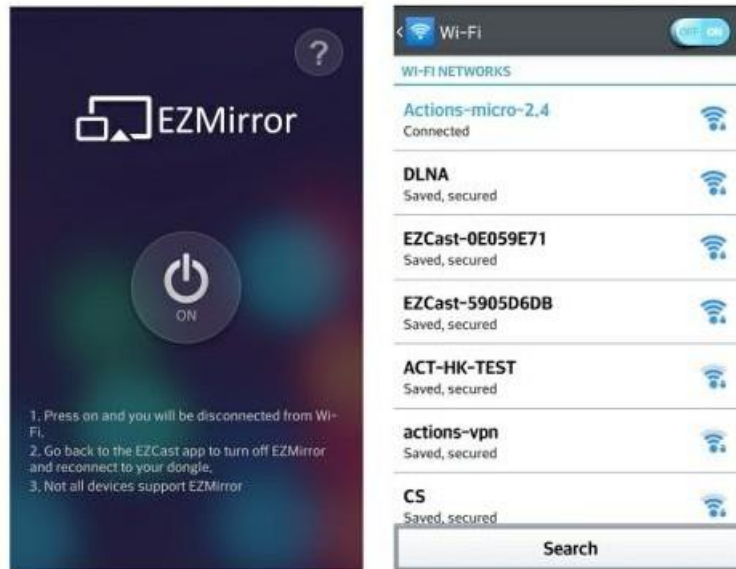


- Once you enter EZChannel, you can enjoy default featured channel, public channel or your friend's channel. Please be noted some features will require logging in.
- You can subscribe your channel here, review your playlists(collections) or install Chrome plug-in in the setting.
- \* Please be noted this function will require internet connection.

## ● DLNA DMR

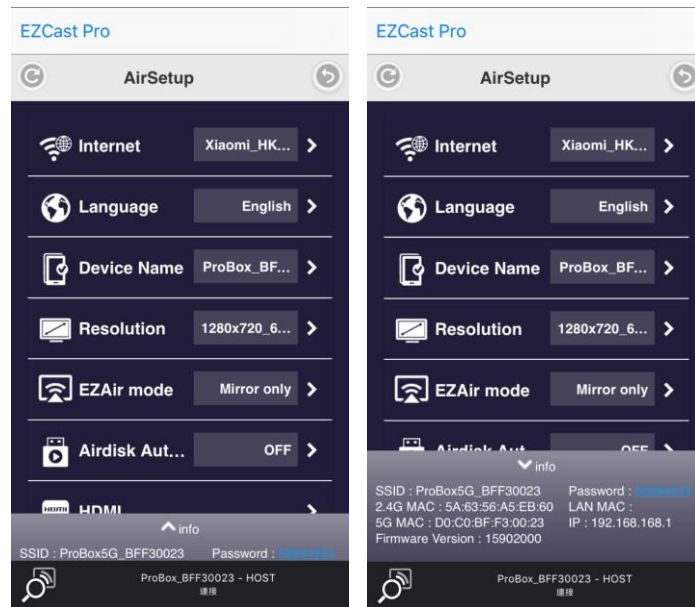


- DLNA is an industrial standard which allows you to stream multimedia formats through WiFi/LAN
  - In the main menu, you can also use DMLA app to push multimedia files to EZCast Pro for streaming.
- EZMirror(Miracast, this is only available for Windows and Android)



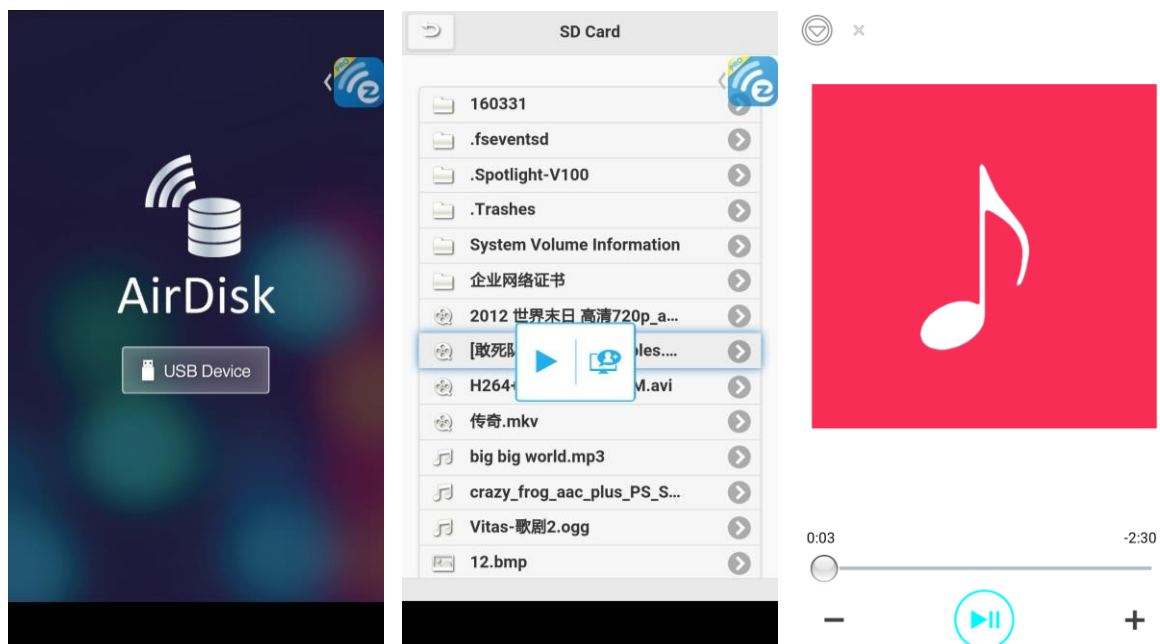
- EZMirror is fully compatible with Miracast, you can click the EZMirror button in EZCast app, and the receiver will be switched to Miracast mode.
- Once you turn it on, there will be a 60seconds countdown for your mobile phone to connect with the receiver. Please select your Miracast function in your mobile phone setting page.
- We also recommend you link your smart phone to your home network at the same time to keep internet connection.
- AirSetup
  - In setting function, you can setup EZCastPro device's configurations including output resolution, change SSID password, setup router

connection for internet surfing, languages, EZAir modes, and turn on/off Airview/Castcode/Miracode...etc.



- Miracode: this is a special code for IP translation for better IP protection
- Castcode: Except host control, the admin can turn on Castcode for guests, they will need to input the 4 digits Castcode shown on screen to cast their content. This will prevent accidentally interruption by some users not in the same conference room..

## ● AirDisk

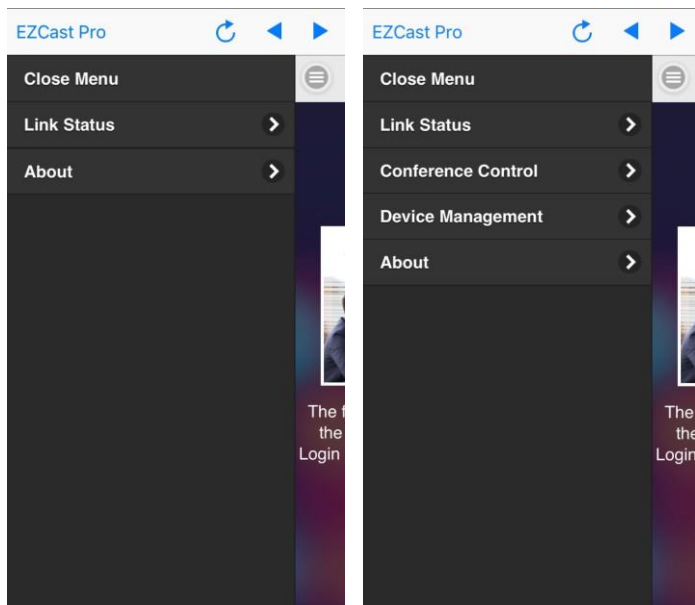


- AirDisk allows you to play the content on USB disk, just plug the USB storage device to Pro Box's USB port, and you can play the content

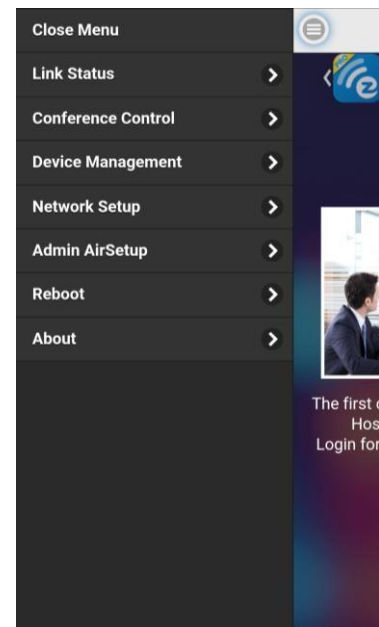
inside of the USB drive

\* Please aware Pro Box only supports USB device with max. 500mA.

## ● Advanced



Example: Non-admin mode (Guest/Host)



Example: Administrator mode

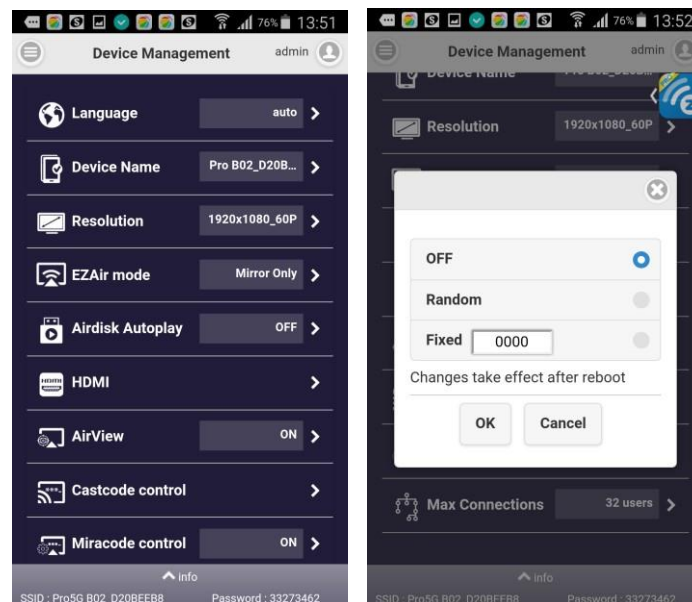
- The Advanced function contains all advanced setting/control including Conference Control, Device Management, Network setup, Admin Setup, Host Authority control, Add CA and Access Control or Reboot and Upgrade FW...etc. The default password is "000000", and you will have to change it while 1st time log-in admin.

**\*Important!!!! Please be careful and keep the new password safe, if you forget the password, the only way to reset it is to contact us for security reason.**

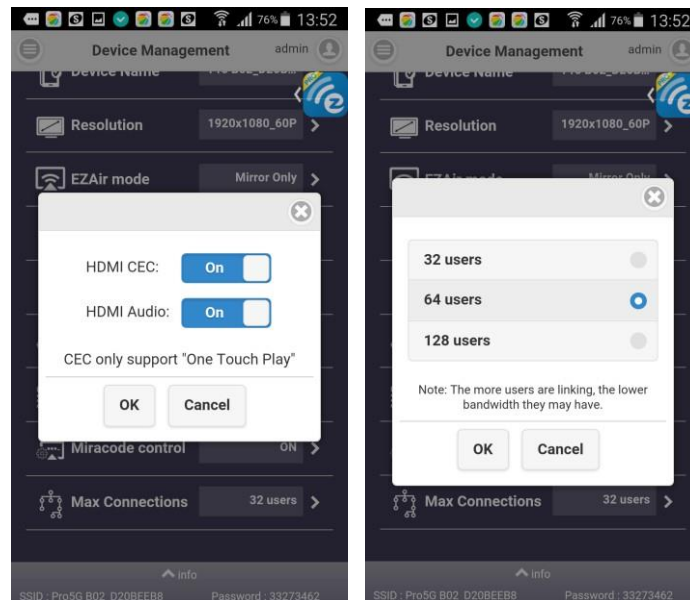
- Link Status
  - ◆ You can check all connected devices status here.
- Conference Control(Default for Host/Admin only)
  - ◆ This is an advanced control for all connected devices, you can select the position and place it.
  - ◆ You can disconnect all at one time, too.
  - ◆ Please be noted some special mode like Miracast will not be controlled by it.



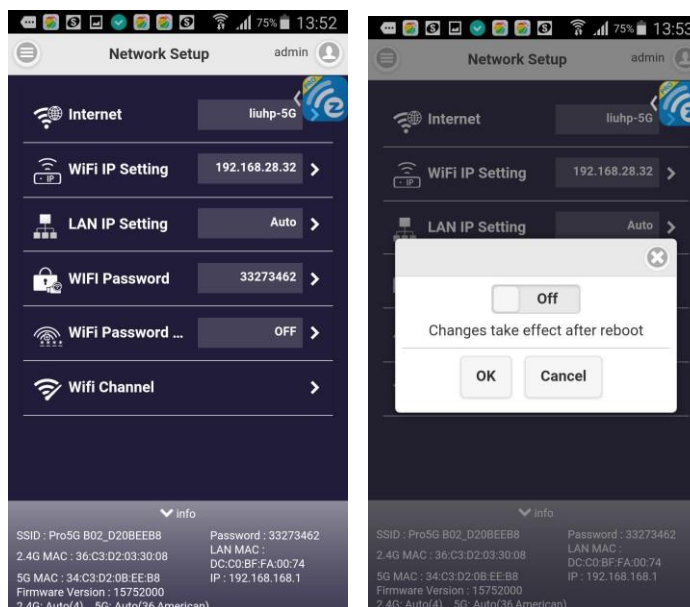
- Device Management (Default for Host/Admin only)
  - ◆ You can modify device setting here, including language, device's host name(not SSID), change resolution, change EZAir mode while playing video (only mirror or stream video), turn on/off AirDisk auto play, HDMI CEC, AirView on/off, Castcode on/off/fixed digit, Miracode on/off, as well as the max. users connection.

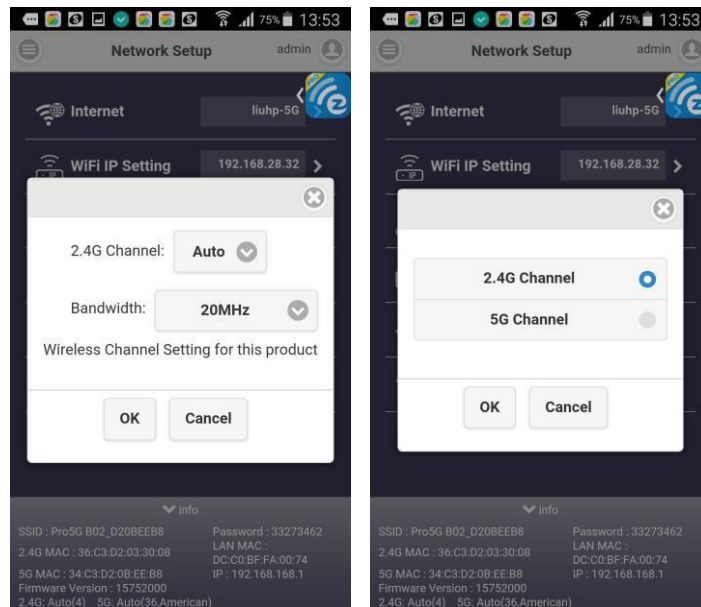






- Network Setup (Default for Admin, but can be enabled for Host by Administrator)
  - ◆ You can adjust network related setting here. Please be noted some settings will require reboot.





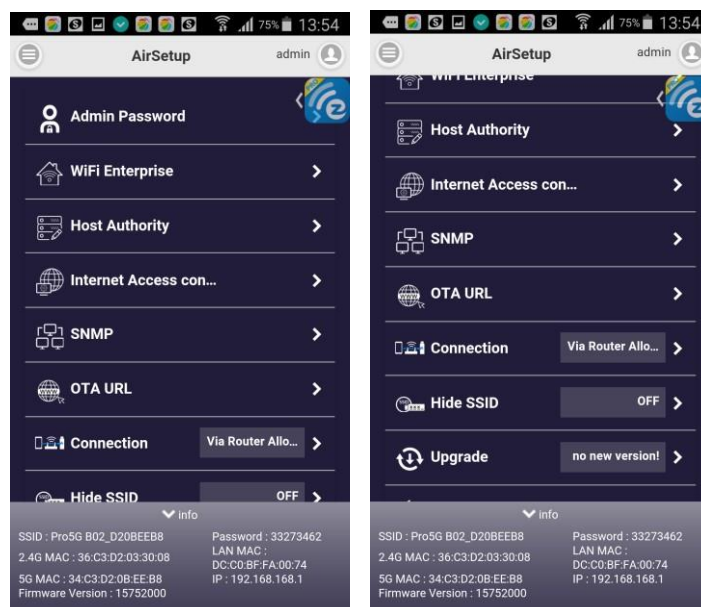
## ■ Admin Setup (Only for Admin)

- ◆ You can adjust more detailed functions here, and you can also release some authorities for Host to control the device, and here are some major features descriptions.

### ■ Password

- ◆ Admin password change, the default password is “000000”, you will have to change it in the 1<sup>st</sup> time log-in as admin.

\*Please be noted to preserve the Administrator password carefully, due to security reason, if you forget it or lose it, this only way to grant it is to contact us to reset it.

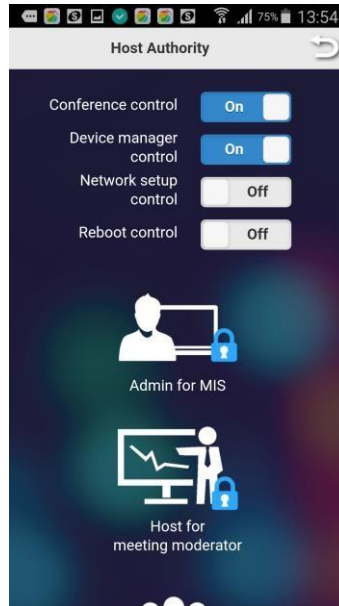


## ■ Host Authority

- ◆ The admin can release some functions to Host so that the host can get some control, too. If some functions are released to host, then

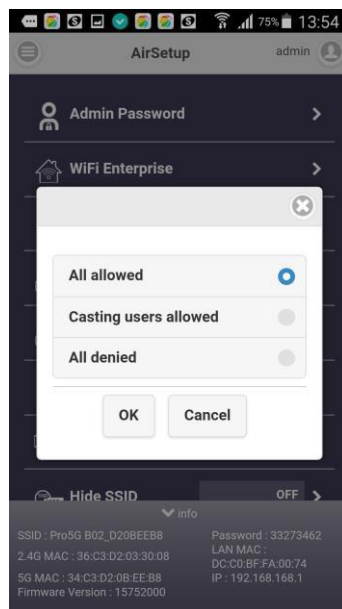


the host can use some functions without logging in as administrator.

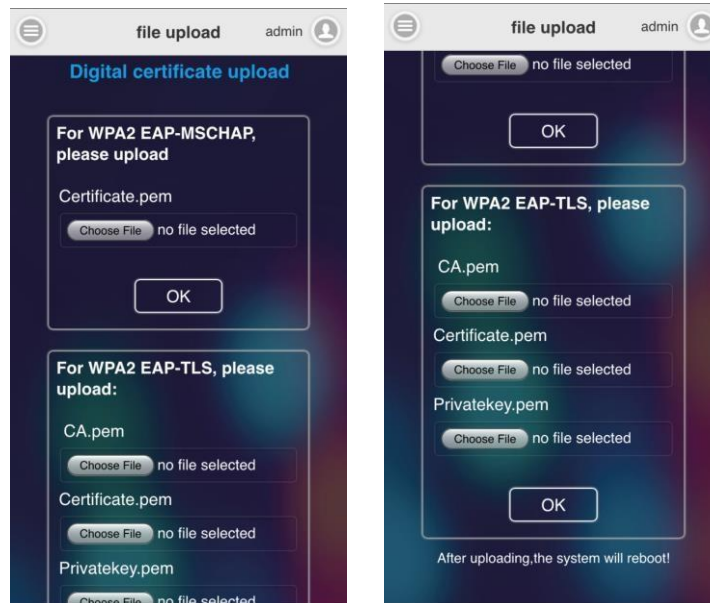


## ■ Access Control

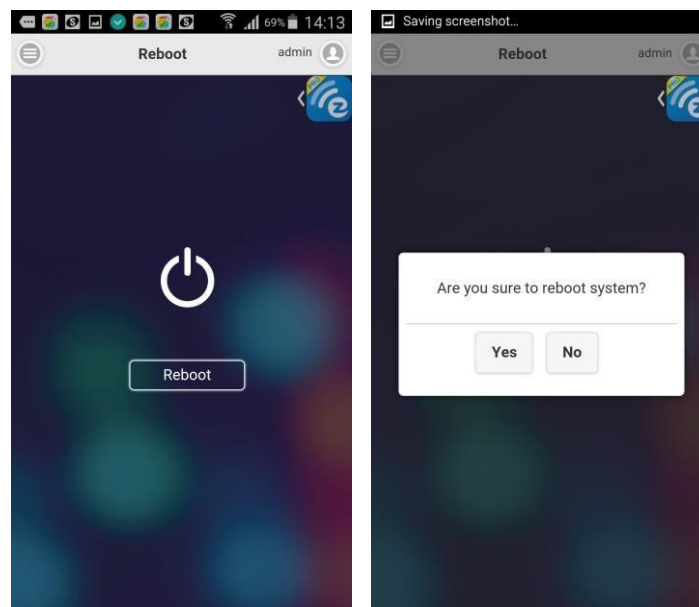
- ◆ The admin can decide if the connected devices can go for internet through EZCast Pro device or not.



- Add CA for WiFi enterprise (802.1x), this is for WiFi Enterprise connection, consult with your MIS for the CA if needed.



- Reboot Control (Default for Admin only, but can be released to Host)
  - ◆ You can reboot the device if you need.



- Reset to Default
  - ◆ Reset all parameters to default.
- About
  - ◆ Show some device information like version and others.

©2014 Actions Microelectronics Co., Ltd. All right reserved. EZCast, and EZCast Pro are trademarks of Actions Microelectronic Co., Ltd., registered in China and other countries. Other product and company names mentioned herein may be trademarks other respective companies.

## FCC STATEMENT

1. This device complies with Part 15 of the FCC Rules. Operation is subject to the following two conditions:

- (1) This device may not cause harmful interference.
- (2) This device must accept any interference received, including interference that may cause undesired operation.

2. Changes or modifications not expressly approved by the party responsible for compliance could void the user's authority to operate the equipment.

NOTE: This equipment has been tested and found to comply with the limits for a Class B digital device, pursuant to Part 15 of the FCC Rules. These limits are designed to provide reasonable protection against harmful interference in a residential installation.

This equipment generates uses and can radiate radio frequency energy and, if not installed and used in accordance with the instructions, may cause harmful interference to radio communications. However, there is no guarantee that interference will not occur in a particular installation. If this equipment does cause harmful interference to radio or television reception, which can be determined by turning the equipment off and on, the user is encouraged to try to correct the interference by one or more of the following measures:

- Reorient or relocate the receiving antenna.

- Increase the separation between the equipment and receiver.

- Connect the equipment into an outlet on a circuit different from that to which the receiver is connected.

- Consult the dealer or an experienced radio/TV technician for help.

## FCC Radiation Exposure Statement

This equipment complies with FCC radiation exposure limits set forth for an uncontrolled environment. This equipment should be installed and operated with minimum distance 20cm between the radiator & your body

本產品符合國家通訊傳播委員會(NCC)之規範：

低功率電波輻射性電機管理辦法

第十二條 經型式認證合格之低功率射頻電機，非經許可，公司、商號或使用者均不得擅自變更頻率、加大功率或變更原設計之特性及功能。

第十四條 低功率射頻電機之使用不得影響飛航安全及干擾合法通信；經發現有干擾現象時，應改善至無干擾時方得繼續使用。前項合法通信，指依電信法規定作業之無線電通信。低功率射頻電機須忍受合法通信或工業、科學及醫療用電波輻射性電機設備之干擾。

★ 您可以在官網下載到最新版完整手冊以及相關品問題：<https://ezcast-pro.com/>

©2014 Actions Microelectronics Co., Ltd. : EZCast與EZCast Pro為Actions Microelectronic Co., Ltd. 炬力北方微電子有限公司在大陸地區與其他國家註冊之商標，說明書中提到的相關產品名稱或商標則屬於相對應之該公司所有。